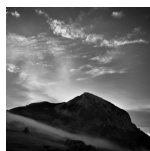


Kinder Padon Gallery

Mother Rock

Andrew Arell



1. *Inducement*, 2021
digital photograph, archival gicleé print
21" x 25" framed
\$500

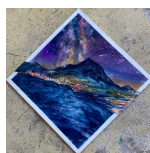


2. *Archetypal Tableau*, 2020
digital photograph, archival gicleé print
23" x 29" framed
\$500



3. *Evening Attire*, 2024
digital photograph, archival gicleé print
21" x 25" framed
\$500

Zach Bauer



1. *Night Diamonds*, 2024
framed original watercolor
28" x 28"
\$1,150



2. *Whimsy at MM.23*, 2024
framed original watercolor, acrylic + ink
17" x 22"
\$750



3. *Upper Highlands Stars*, 2024
framed original watercolor
41" x 47"
\$1,650



4. *Auroras & Butte*, 2024
framed original watercolor
11" x 14"
\$450



5. *Warming House History*, 2024
framed original watercolor
12" x 16"
\$650

For more information, reach out to Amanda Whiteford, Gallery Coordinator
e: amanda@crestedbuttearts.org o: (970)349-7487 x 717

Kinder Padon Gallery

Mother Rock

Bren Corn



1. *Alpenglow on the Snowmageddon*, 2023

acrylic & oil on linen

36" x 36"

\$3,600

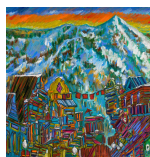


2. *CB in Deep*, 2024

acrylic on canvas, custom ambrosia maple frame

24" x 24"

\$2,200



3. *CB Three*, 2024

oil on linen, custom ambrosia maple frame

30" x 30"

\$2,400

Dawn Cohen



1. *April Snow*

plein air oil on canvas

36" x 30" framed

\$5,075



2. *Mountain Reflection with Ducks*

plein air oil on canvas

30" x 36" framed

\$4,250



3. *Mt Crested Butte Fall Color*

plein air oil on canvas

24" x 26" framed

\$4,200

For more information, reach out to Amanda Whiteford, Gallery Coordinator
e: amanda@crestedbuttearts.org o: (970)349-7487 x 717

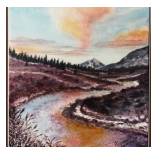
Kinder Padon Gallery

Mother Rock

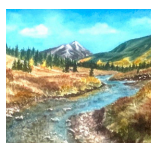
Karen Clement



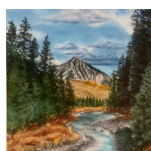
1. *Slate River by Lower Loop, 2022*
watercolor
20" x 33"
\$725



2. *Late Fall Sunrise, East River, 2023*
watercolor
14.5" x 20.5"
\$395



3. *East River Autumn, 2024*
waxed watercolor, aspen wood frame with turquoise inlay
14" x 25"
\$650



4. *Crested Butte / Slate River Autumn, 2024*
watercolor
21" x 27"
\$675



5. *Slate River by Lower Loop, 2024*
waxed watercolor
14" x 17.5"
\$345

Shaun Horne



1. *Ski Area, Bluebird*
plein air oil on canvas
34" x 48" framed
\$6,800

Kinder Padon Gallery

Mother Rock

Sita Fenerty



1. *Anthracites*
oil on canvas
16" x 20"
\$960 with frame



2. *Axtell*
oil on canvas
16" x 20"
\$960 with frame



3. *Gothic*
oil on canvas
16" x 20"
\$960 with frame



4. *Castles*
oil on canvas
16" x 20"
\$960 with frame



5. *Crested Butte*
oil on canvas
16" x 20"
\$960 with frame

For more information, reach out to Amanda Whiteford, Gallery Coordinator
e: amanda@crestedbuttearts.org o: (970)349-7487 x 717

Kinder Padon Gallery

Mother Rock

Nina Kisker



1. *Mt CB Raku Platter*
ceramic
18.5" Diameter x 3.5" H
\$250



2. *Raku Houses, (set of 7, not sold individually)*
ceramic
12" H x 4" H x 3" D
\$200



3. *Snowy Mt CB Oval Platter*
ceramic- foodsafe, microwavable, dishwasher safe, oven safe
18.5" W x 12" H x 2.5" Deep
\$125



4. *Snowy Mt CB Round Platter*
ceramic- foodsafe, microwavable, dishwasher safe, oven safe
15.5" Diameter x 3" Deep
\$125



5. *Mountain Mug*
ceramic- foodsafe, microwavable, dishwasher safe, oven safe
4" H x 5.5" W
\$60

For more information, reach out to Amanda Whiteford, Gallery Coordinator
e: amanda@crestedbuttearts.org o: (970)349-7487 x 717

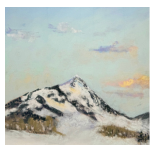
Kinder Padon Gallery

Mother Rock

Victoria Wise



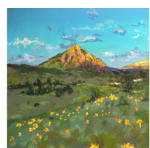
1. *Her Majesty*, 2024
soft pastel on pastelmat
16" x 19" framed
\$875



2. *Solstice*, 2024
soft pastel on pastelmat
11" x 14" framed
\$450



3. *Prospect*, 2024
soft pastel on pastelbord
41" x 29" framed
\$2300



4. *Sunset in the Valley*, 2024
soft pastel on pastelbord
22" x 28" framed
\$875



5. *Lupine and Clouds*, 2024
soft pastel on pastelbord
22" x 28"
\$875

For more information, reach out to Amanda Whiteford, Gallery Coordinator
e: amanda@crestedbuttearts.org o: (970)349-7487 x 717